



ATCoach® Tactical Edition – AN/GPN-22

Precision Approach Radar Simulator

AT Coach is an advanced, multi-function, real-time Air Traffic Control (ATC) Simulator.

ATVoice is a continuous speaker independent voice recognition and response system designed to automatically act as the pilot or pilots during a simulation.

UFA, *The Experts in Air Traffic Control Simulation*, combines ATCoach and ATVoice to produce the Air Force Precision Approach Radar Simulator.

The simulator's core capabilities include:

- Realistic Radar Presentation for Multiple Radar Models
- Surveillance Approaches
- Precision Approaches
- Voice Recognition and Response Control
- Request and Acknowledge Unit (RAU) Control
- Instructor Station Control

The system allows the user to simulate virtually any air traffic situation and manipulate events during the scenario to meet specific training objectives.

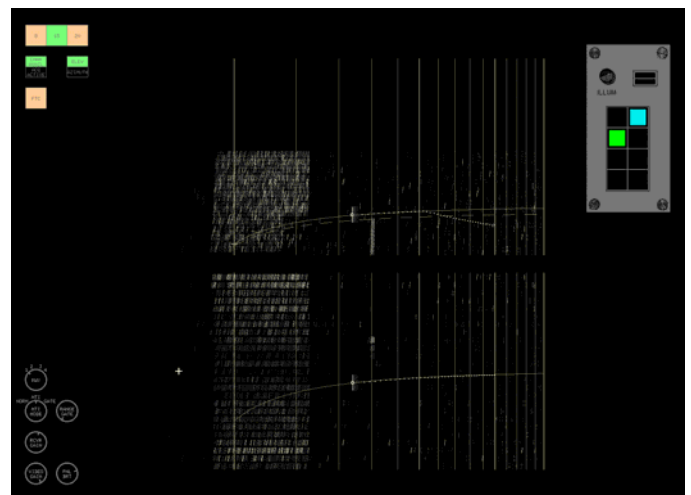


The simulator may be configured by the user to operate as a single position standalone trainer or the simulator may also be configured with a second workstation. When configured in this manner, either position may be designated as a supervisor station, allowing for exercise manipulation directly from that position; or they may be configured as two independent control positions each running their own exercise.

Simulator Features

Display

- ATCoach provides the flexibility to customize and control the display based on user preference.
- The simulator may be operated as an AN/GPN-22(V) or AN/TPN-25 Precision Approach Radar system. Additional versions for the AN/TPN-18 and AN/TPN-31 are also available.
- Primary returns and track symbols are displayed similarly to the targets on the selected radar type.
- Integrated RAU provides visual and auditory notifications from the tower.
- Soft-keys displayed are fully functional.





ATCoach® Tactical Edition – AN/GPN-22

Precision Approach Radar Simulator

Controls & Configuration

- Manipulation of frequently used radar console and RAU controls are provided via soft panel, trackball, or keyboard.
- Multiple runways may be defined, facilitating PAR training to any runway at any time.
- The aircraft model file allows for an aircraft's flight characteristics to be fully adjustable by the user.
- Site data files can easily be developed or modified by the user to support changes to airfield facilities or to simulate new airfields.



Weather & Clutter

- Precipitation may be displayed at any position, time, heading & speed in varying intensity levels.
- Wind may be enabled or disabled as desired. Up to 20 different layers may be activated at once.
- Ground clutter may be displayed at any time and position in varying levels of density.

Exercise Characteristics

- Exercise scenarios can be easily created and modified using the data preparation tools.
- Events or actions can be preprogrammed, and triggered at any time during the exercise.
- Popup aircraft may be generated and entered into the scenario at any time.

- ATExpert monitors ATC rules prescribed by FAA Order 7110.65 during each exercise. If a rule is violated, an alert is activated.
- Exercises are recorded for synchronized playback with Controller voice input. During playback, the exercise can be stopped, fast forwarded and restarted at any point in time.

Voice Recognition & Response

- ATVoice software provides voice recognition and pilot response capabilities.
- Voice grammars are customizable to support phraseology unique to the host facility.
- Five different "pilot" voices are supported.
- A voice recognition monitor window is available for each position to view phraseology and commands.

Additional Information & Demonstrations

To obtain additional information or arrange for a demonstration please contact any of the following:

UFA, Inc.
 101 Lake Forest Boulevard
 Suite 401
 Gaithersburg, Maryland 20877
 USA
 Mr. Bert Harrold
 +1 301 216 9858
bertufa@aol.com

UFA, Inc.
 18 Commerce Way
 Suite 4000
 Woburn, Massachusetts 01801
 USA
 Mr. Richard Collier
 +1 781 932 5600 x104
rcollier@UFAinc.com

UFA, Inc.
 Innovapark 20
 D-87600 Kaufbeuren
 Germany
 Herr Peter Bischof
 +49 8341 916 080
Peter.Bischof@UFAinc.com

ATCSim, GmbH
 Carl-Zeiss-Strasse 41
 D-55129 Mainz-Hechtsheim
 Germany
 Herr Axel Seitz
 +49 6131 250 533 30
axel@ATCSim.de



ATCoach® is a registered trademark of UFA, Inc., in the USA
 ATTower® is a trademark of UFA, Inc., in the USA
 TOWSIM® is a registered trademark of UFA, Inc., in the EU
 ATVoice® is a registered trademark of UFA, Inc., in the USA